

Anti His Monoclonal Antibody

Catalog No.	■	LT0426, 50ug, lyophilized with PBS, pH7.4
Description	■	Anti-His Tag (HIS.H8) Monoclonal Antibody
Clonality	■	HIS.H8
Host Species Isotype	■	Mouse IgG2b
Immunogen	■	HHHHHH (6x His) synthetic peptide conjugated to KLH
Specificity	■	Recognizes the epitope of 6x His-tags encoded by many commercially available vectors, regardless of the tag's location in the fusion protein sequences (i.e.: reacts with N-terminal, C-terminal or internal 6x His-tags)
Sensitivity	■	WB (with ECL): 1-2ng of His-tagged fusion proteins
Purification	■	Protein A affinity chromatography from mouse ascites fluid
Application	■	Dot, ELISA, IP, IS, WB
Working Condition	■	WB (with ECL): 1:1000-3000 dilution (incubate for one hour at room temperature) IS: 1:500-2000 dilution. For best results with other assays (e.g.: Dot, ELISA, etc), please determine optimal working dilution by titration test. Reconstitute the lyophilized antibody with deionized water (or equivalent) to a final concentration of 50ug/50ul.
Storage	■	Store at -20°C for up to 2 years. Centrifuge after first thaw to maximize product recovery. Aliquot to avoid repeated freeze-thaw cycles. Store aliquots at 4°C for 1-2 weeks

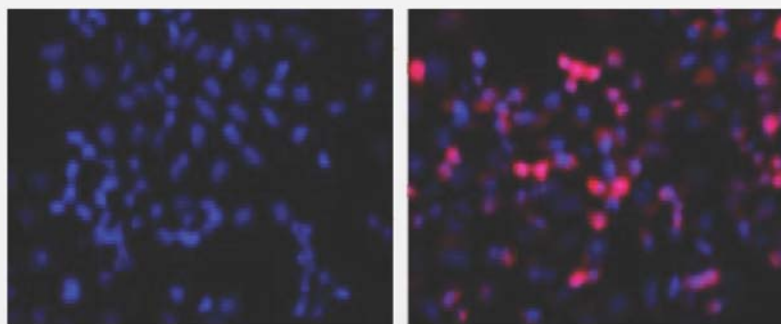


Fig. 01 LEFT: untransfected control; RIGHT: anti-His (in red) on His-tagged fusion proteins in HEK293 cells. Both counterstained with DAPI (in blue)

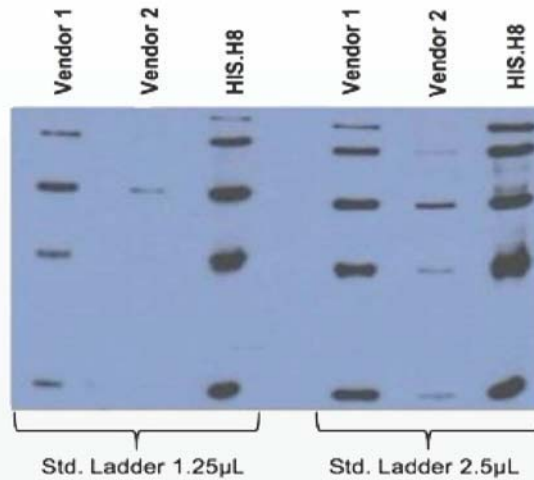


Fig. 02 Comparison between anti-His tag (HIS.H8 / EH158) mAb with 2 different vendor Abs, probed against a standard ladder (Qiagen Cat. No. 34705) containing five different His-tagged proteins. All Ab dilutions are 1:2000 (0.5µg/mL)

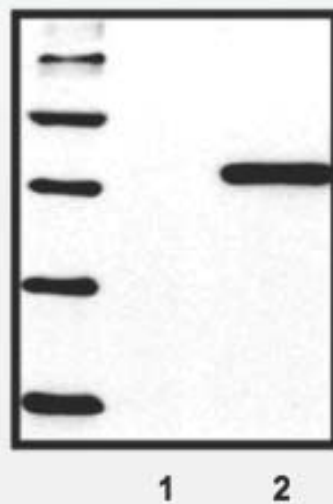


Fig. 03 Standard ladder containing five different His-tagged proteins; untransfected control (1), HEK293 cells transfected with His-tagged protein vector (2)