

Anti ERK1 (E19) Monoclonal Antibody

Catalog No. ■ LT9998

Description ■ Anti-ERK1 (E19) Signal Transduction Monoclonal Antibody

Clonality ■ E19

Host Species | Isotype ■ Mouse | IgG1

Immunogen ■ Recombinant full length ERK1 protein

Specificity ■ Recognizes only the ERK1 protein (e.g.: from human and mouse cells)

Cross Reactivity ■ WB: ERK1 from human and mouse cells. IP: ERK1 from human cells. ERK1 from other species may also be detectable

Purification ■ Protein A affinity chromatography from mouse ascites fluid

Application ■ IP, WB

Working Condition ■ WB (with ECL): 1:1000-10,000 dilution (incubate for one hour at room temperature) For best results with other assays (e.g.: IP, etc), please determine optimal working dilution by titration test

Storage ■ Store at -20°C for up to 2 years. Centrifuge after first thaw to maximize product recovery. Aliquot to avoid repeated freeze-thaw cycles. Store aliquots at 4°C for 1-2 weeks

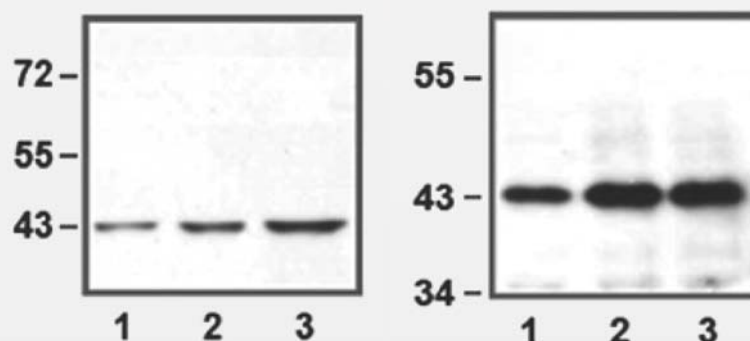


Fig. LEFT: 1:10,000 (0.1 µg/mL) Ab dilution used in WB of HEK293 cell lysate; 1 µg (1), 5 µg (2), and 10 µg (3) of cell lysate used; RIGHT: IP of anti-ERK1 using 50 µg of Jurkat cell lysate; 0.5 µg (1), 1 µg (2), and 2 µg (3) of anti-ERK1 used